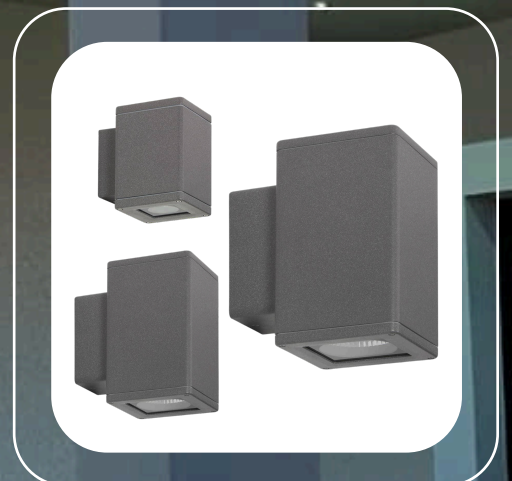




**BULLARD
BOLLARDS**
Think Bollard Think Bullard

ERROT WALL COLLECTION - 1L





**BULLARD
BOLLARDS**
Think Bullard Think Bullard

CODE:
BB-001960.BRST-GH

FIXTURE TYPE: _____

PROJECT NAME: _____

NOTES:



GENERAL INFORMATION:

ERROT Wall Collection it is a series of a wall-mounted spot lights designed for wall effect lighting of walls and facades. Available in various sizes to satisfy and respect the proportion required in the project. Thanks to the availability of various combinations of lights, optics and power allow to create suggestive scenographic effects. The body is constructed of high oxidation resistant aluminum alloy which is subjected to nano-bonderite treatment and finished with texturized polyester powder paint, making the product resistant to atmospheric agents and UV rays, guaranteeing maximum protection over the years. Silicone gaskets ensure maximum sealing in all operating and temperature conditions. The ultra transparent tempered sodium calcium glass diffuser ensures maximum light transmittance and is finished with a silkscreen border. All the external screws are in stainless steel.

LIGHTING:

LED

LED

VOLTAGE:

110-277V



GASKETS:

Silicone gaskets

FIXTURE TYPE:

Wall Luminaires

MATERIAL:

Extruded aluminum EN AW-6060 T5 high resistance to oxidation, Die-cast aluminum EN AB 44100 highly resistant to oxidation

EXTERNAL SCREWS:

Stainless Steel A4

DIFFUSER MATERIAL:

Tempered glass 4mm

IP RATING:

IP 65

IP65

APPLINCE CLASS:

I



THINK BOLLARD - THINK BULLARD

sales@gordonbullard.com

www.bullardbollards.com

1-877-964-4646



991 South Gull Lake Dr

Richland, MI 49083

USA



**BULLARD
BOLLARDS**
Think Bollard Think Bullard

CODE:
BB-001960.BRST-GH

FIXTURE TYPE: _____

PROJECT NAME: _____

NOTES:



OPERATION RANGE:

110-277V - 50/60 Hz

DRIVER POSITION:

Integral

CRI:

>90

CABLE ENTRY / CABLE TYPE:

Brass cable gland M12 Ø 3.5/7 mm

LIGHT DISTRIBUTION:

- 14° - Symmetrical narrow beam ($\leq 15^\circ$)
- 15° - Symmetrical narrow beam ($\leq 15^\circ$)
- 22° - Symmetrical medium flood ($15^\circ - 45^\circ$)
- 32° - Symmetrical medium flood ($15^\circ - 45^\circ$)
- 35° - Symmetrical wide beam ($45^\circ - 125^\circ$)
- 37° - Symmetrical wide beam ($45^\circ - 125^\circ$)
- 64° x 82° x 20° - Asymmetric flood (wall washer)

BEAM DIRECTIONABILITY:

Fixed optics

OPTICS:

Anti UV technopolymer lens

WARRANTY:

LED lighting products are warranted for 5 years.

MAIN FEATURES:

- High visual comfort
- Wide range of finishes
- Functional design / Minimal design
- Operating Temperature: $-22^\circ\text{F} \sim 122^\circ\text{F}$

THINK BOLLARD - THINK BULLARD

sales@gordonbullard.com
www.bullardbollards.com
1-877-964-4646



991 South Gull Lake Dr
Richland, MI 49083
USA

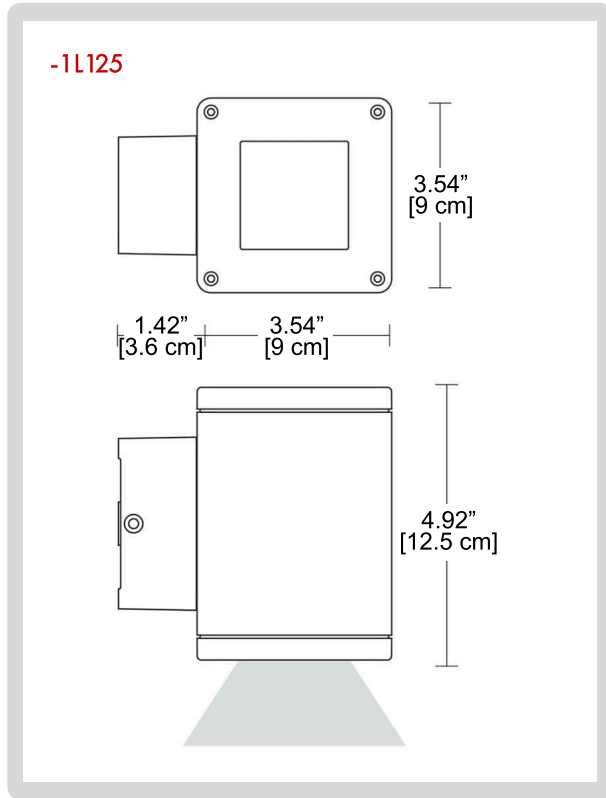


**BULLARD
BOLLARDS**
Think Bollard Think Bullard

CODE:
BB-001960.BRST-GH

FIXTURE TYPE: _____

PROJECT NAME: _____



HOW TO ORDER: _____ **CODE:** _____

Example:
**CODE: BB-001960.BRST-GH-1L125-B1-L1-
NON-01**

**BB-001960.BRS
T-GH-1L125-
B1-L1-NON-01**

1 MODELS:

-1L125

A) Length - L: 3.54" [9 cm]
B) Width - W: 3.54" [9 cm]
C) Height - H: 4.92" [12.5 cm]

2 BEAM ANGLE:

-B1 14°
-B2 32°

3 LIGHT SOURCE:

-L1 LED | 1 x 11.9W | 3000K | 1 x 1635 lm | 110-277V
-L2 LED | 1 x 11.9W | 4000K | 1 x 1768 lm | 110-277V
-L3 LED | 1 x 5.8W | 3000K | 1 x 872 lm | 110-277V
-L4 LED | 1 x 5.8W | 4000K | 1 x 942 lm | 110-277V

4 DIMMING OPTIONS:

-NON NON-Dimmable
-DIM 0-10V
-DAL Dali

5 FINISH OPTIONS:

-01 White matt		-45 Corten matt	
-02 Black matt		-62 Antique grey matt	
-05 Anthracite grey matt		-65 Blue matt	
-19 Light grey matt		-80 Sand matt	
-26 Bronze		-83 Green matt	

THINK BOLLARD - THINK BULLARD

sales@gordonbullard.com
www.bullardbollards.com
1-877-964-4646



991 South Gull Lake Dr
Richland, MI 49083
USA

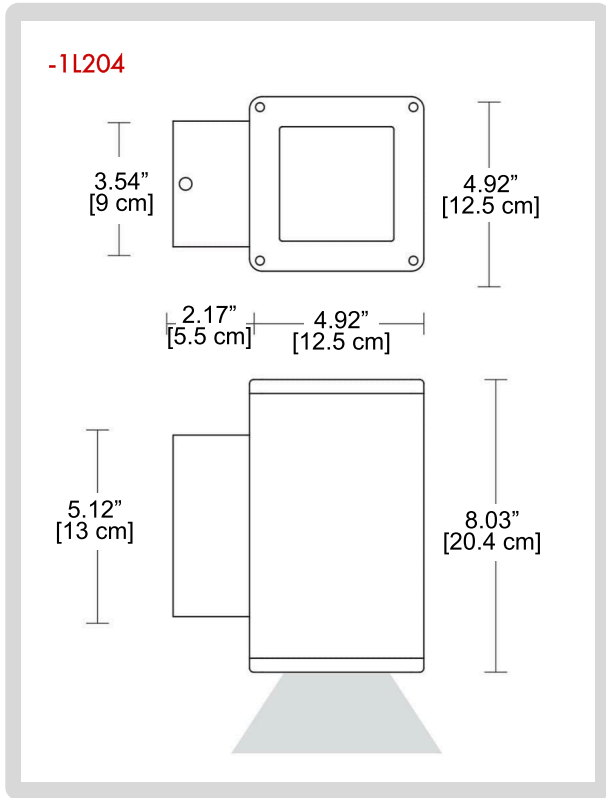


**BULLARD
BOLLARDS**
Think Bullard Think Bullard

**CODE:
BB-001960.BRST-GH**

FIXTURE TYPE: _____

PROJECT NAME: _____



HOW TO ORDER:

CODE:

Example:
CODE: BB-001960.BRST-GH-1L125-B1-L1-
NON-01

BB-001960.BRS
T-GH-1L125-
B1-L1-NON-01

1

MODELS:

-1L204

A) Length - L: 4.92" [12.5 cm]
B) Width - W: 4.92" [12.5 cm]
C) Height - H: 8.03" [20.4 cm]

2

BEAM ANGLE:

-B1 14°
-B2 22°
-B3 35°

3

LIGHT SOURCE:

-L1 LED | 1 x 14.7W | 3000K | 1 x 2181 lm | 110-277V
-L2 LED | 1 x 14.7W | 4000K | 1 x 2345 lm | 110-277V

4

DIMMING OPTIONS:

-NON NON-Dimmable
-DIM 0-10V
-DAL Dali

5

FINISH OPTIONS:

-01 White matt		-45 Corten matt	
-02 Black matt		-62 Antique grey matt	
-05 Anthracite grey matt		-65 Blue matt	
-19 Light grey matt		-80 Sand matt	
-26 Bronze		-83 Green matt	

THINK BOLLARD - THINK BULLARD

sales@gordonbullard.com
www.bullardbollards.com
1-877-964-4646



991 South Gull Lake Dr
Richland, MI 49083
USA

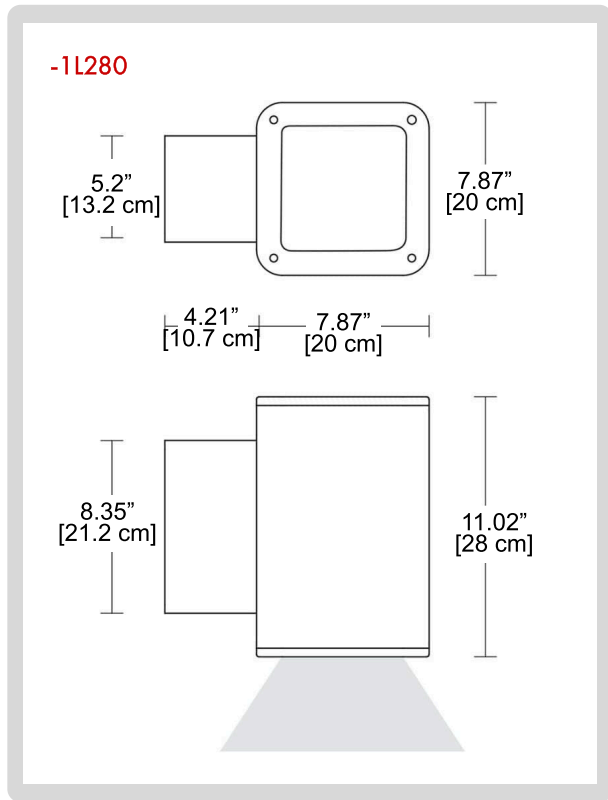


**BULLARD
BOLLARDS**
Think Bullard Think Bullard

**CODE:
BB-001960.BRST-GH**

FIXTURE TYPE: _____

PROJECT NAME: _____



HOW TO ORDER:

CODE:

Example:
CODE: BB-001960.BRST-GH-1L125-B1-L1-
NON-01

BB-001960.BRS
T-GH-1L125-
B1-L1-NON-01

1 MODELS:

-1L280

A) Length - L: 7.87" [20 cm]
B) Width - W: 7.87" [20 cm]
C) Height - H: 11.02" [28 cm]

2 BEAM ANGLE:

-B1 15°
-B2 37°
-B3 74°
-B4 64°x82°x20°

3 LIGHT SOURCE:

-L1 LED | 1 x 23.7W | 3000K | 1 x 3306 lm | 110-277V
-L2 LED | 1 x 23.7W | 4000K | 1 x 3555 lm | 110-277V
-L3 LED | 1 x 37.1W | 3000K | 1 x 4788 lm | 110-277V
-L4 LED | 1 x 37.1W | 4000K | 1 x 5149 lm | 110-277V
-L5* LED | 1 x 25.5W | 3000K | 1 x 2874 lm | 110-277V
-L6* LED | 1 x 25.5W | 4000K | 1 x 3093 lm | 110-277V

NOTE: *L5 & *L6 - Only for 15° beam angle

4 DIMMING OPTIONS:

-NON NON-Dimmable
-DIM 0-10V
-DAL Dali

5 FINISH OPTIONS:

-01 White matt		-45 Corten matt	
-02 Black matt		-62 Antique grey matt	
-05 Anthracite grey matt		-65 Blue matt	
-19 Light grey matt		-80 Sand matt	
-26 Bronze		-83 Green matt	

THINK BOLLARD - THINK BULLARD

sales@gordonbullard.com

www.bullardbollards.com

1-877-964-4646



991 South Gull Lake Dr

Richland, MI 49083

USA